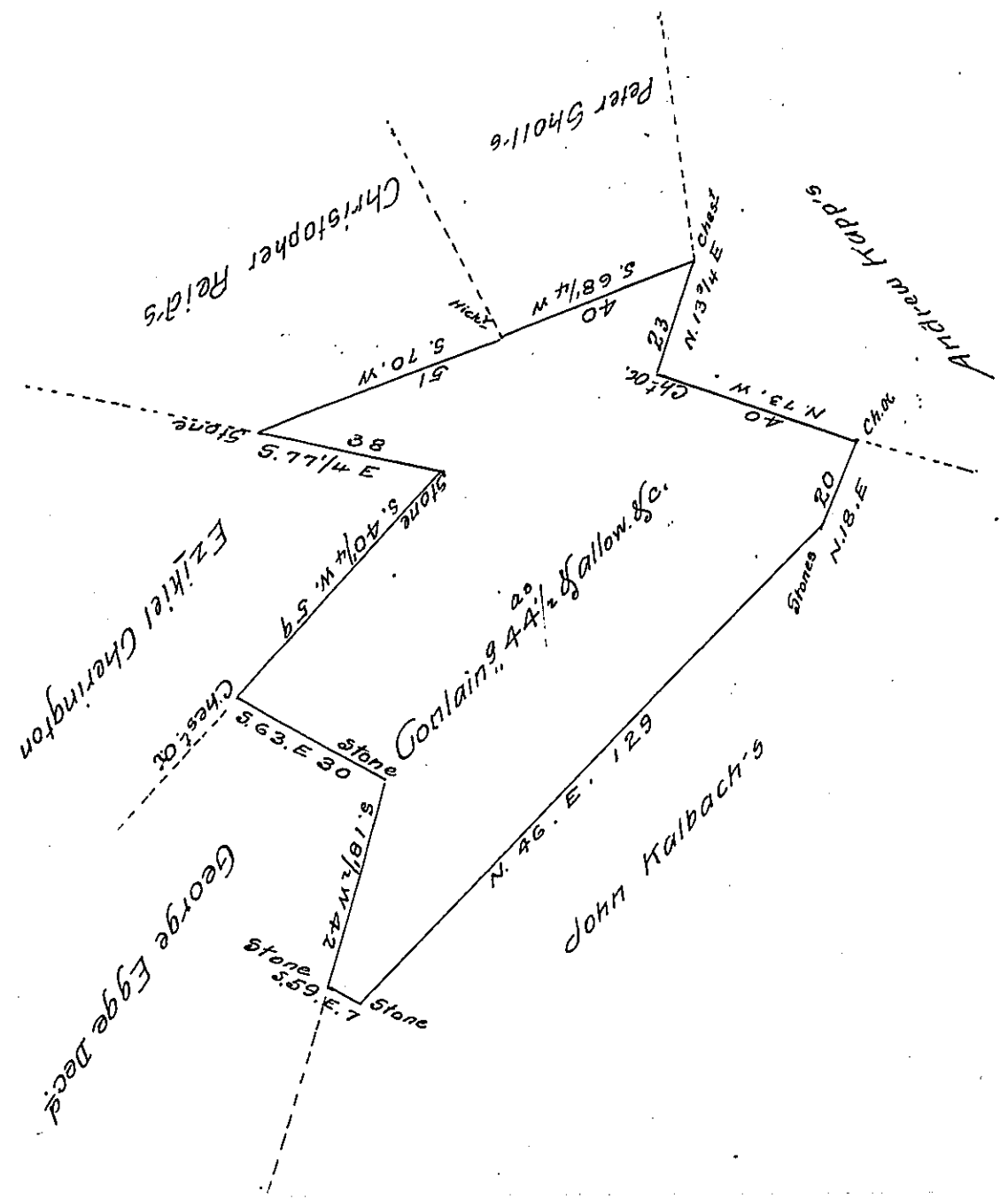


FORM NO. 1.



The above described tract of land situate in Heidelberg Township in the County of Lebanon containin^g Forty four acres and an half and the usual allowance &c. Survey^d the 24th day of August A.D. 1831 in pursuance of a warrant dated the 12th day of Aug^t A.D. 1831 granted to Ezekiel Cherington

Tob^s Kreider Jr.
Dep^y Surveyor

To Jacob Spangler Esq^t
Surveyor General of Penn^a

N.B. As I understand the above tract of land is in dispute and claimed by Heirs of George Egge Dec'd

Tob^s Kreider Jr

IN TESTIMONY that the above is a copy of the original remaining on file in the Department of Internal Affairs of Pennsylvania, made conformably to an Act of Assembly approved the 16th day of February 1833, I have hereunto set my hand and caused the Seal of said Department to be affixed at Harrisburg, this eighteenth day of December 1907

Henry Houch
Secretary of Internal Affairs.